

# Senior Parent Seminar

Class of 2026



**Problem Solver**



**Team Player**



**Global Thinker**



# **PVMHS**

## **VISION OF THE GRADUATE**



**Path Finder**



**Effective Communicator**



**Self Manager**



**Artist Innovator**

# PVMHS GUIDANCE DEPARTMENT

A-HOUSE

WILLIAM KROL [krolw@peabody.k12.ma.us](mailto:krolw@peabody.k12.ma.us) 978-536-4550

TARYN MOLK [molkt@peabody.k12.ma.us](mailto:molkt@peabody.k12.ma.us) 978-536-4538

B-HOUSE

JENNIFER DINARELLO [dinarelloj@peabody.k12.ma.us](mailto:dinarelloj@peabody.k12.ma.us) 978-536-4537

GINA SCHOENFELD [schoenfeldg@peabody.k12.ma.us](mailto:schoenfeldg@peabody.k12.ma.us) 978-536-4532

C-HOUSE  
4541

ELIZABETH MCGOVERN [mcgoverne@peabody.k12.ma.us](mailto:mcgoverne@peabody.k12.ma.us) 978-536-

CHRISTINA PRINZIVALLI [prinzivallic@peabody.k12.ma.us](mailto:prinzivallic@peabody.k12.ma.us) 978-536-4536

PLA  
536-5585

KARA MIGLIOZZI [migliozzik@peabody.k12.ma.us](mailto:migliozzik@peabody.k12.ma.us) 978-

PEABODY PREP

KIMBERLY FRANK [frankk@peabody.k12.ma.us](mailto:frankk@peabody.k12.ma.us) 978-536-4670

GUIDANCE CENTER DIANA FINN [finnd@peabody.k12.ma.us](mailto:finnd@peabody.k12.ma.us) 978-536-4533

# PLANNING FOR THE FUTURE

EMPLOYMENT

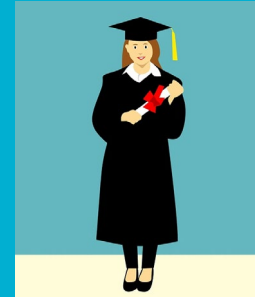


MILITARY



CAREER TRAINING

COLLEGE



# GRADUATION REQUIREMENTS

English	4 years (20 credits)
Social Studies (US History I or II)	3 years (15 credits)
Science	2 years (10 credits)
Wellness	3 years (7.5 credits)
Mathematics	3 years (15 credits)
Community Service	40 hours (4 credits)

**To Graduate:**

**115 credits total**

MCAS: All students are required to take the MATH, ELA and BIOLOGY MCAS exams.

# UMASS/STATE MINIMUM ADMISSIONS REQUIREMENTS

- 4 courses English
- 4 courses Mathematics
- 3 courses Science
- 3 courses Social Sciences
- 2 courses World Language (in a single language)

Minimum Required Grade Point Average (GPA) 3.0 (however the average accepted student's GPA usually above 3.5 (For UMass Lowell and Amherst))

A minimum grade point average in college preparatory course work at the end of the seventh semester is required for Freshman Applicants. *The UMass schools require a weighted 3.0 GPA for admission* For students whose GPA falls below the minimum, the provisional sliding scale below will apply.

# SLIDING GPA SCALE

SAT* score must be for			ACT score must be for	
Applicant GPA	State Universities	UMASS	State Universities	UMASS
2.51-2.99	920	1030	19	20
2.41-2.50	960	1070	20	21
2.31 -2.40	1000	1110	21	22
2.21-2.30	1040	1140	22	23
2.11-2.20	1080	1180	23	24
2.00-2.10		1220	24	25

***No Massachusetts University will admit a student with a GPA below 2.0.***

# STANDARDIZED TESTING

## TEST OPTIONAL

**\*Many schools are test optional**

**[www.fairtest.org](http://www.fairtest.org)**

**Including all UMASS schools. BC, BU, Suffolk, most if not all public state college/universities in MA, etc**

**SAT Reasoning Test- Scholastic Aptitude Test**

**\*Sign-up at:**

**[www.sat.collegeboard.org](http://www.sat.collegeboard.org)**

**ACT- ACT Assessment**

**\*Sign-up at: [www.act.org](http://www.act.org)**

## AP- Advanced Placement Tests

**Students taking AP courses MUST take the AP exam.**

**TOEFL- Test of English as a Foreign Language**

**\*Sign-up at: [www.ets.org/toefl](http://www.ets.org/toefl)**



# RESEARCHING COLLEGES

## REACH, REALISTIC & SAFETY

- ★ CHECK NAVIANCE FOR GPA & SAT SCORES
- ★ USE THE COLLEGE SEARCH FEATURES ON NAVIANCE AND COLLEGE BOARD
  - COST, LOCATION AND MAJORS*
- ★ VISIT COLLEGE ADMISSION WEBSITES
- ★ COLLEGE FAIR 10/5
- ★ COLLEGE ADMISSION REPRESENTATIVES ON GOING
- ★ MEETINGS WITH YOUR GUIDANCE COUNSELOR
- ★ TALK TO YOUR FAMILY

# DID YOU KNOW?

## NORTH SHORE COMMUNITY COLLEGE

- ★ CERTIFICATE, DEGREE & TRANSFER PROGRAMS
- ★ [MASS TRANSFER](#)
- ★ FREE APPLICATION
- ★ APPLY ONLINE DIRECTLY TO COLLEGE
  - <https://www.northshore.edu/admissions/apply/index.html>
- ★ NO SATS, ESSAY OR RECOMMENDATIONS NEEDED
- ★ ON -THE-SPOT ADMISSIONS AT PVMHS
- ★ COMMONWEALTH COMMITMENT

## SALEM STATE UNIVERSITY

- ★ FREE APPLICATION (December 1)
- ★ APPLY on Common Application
- ★ NO ESSAY OR RECOMMENDATIONS NEEDED
- ★ SAT OPTIONAL
- ★ Direct Admission Application (Common Application)
- ★ ON-THE-SPOT ADMISSIONS AT PVMHS
  - December 4 - during the school day

# Parts of the College Application

Application - Common Application - <https://www.commonapp.org/>

Application Fees (free/reduced lunch=waiver)

High School Transcript/Final Transcript (sent by PVMHS)

Standardized Test Scores (if required - student requests scores sent thru College Board)

Letters of Recommendation (students make requests in Naviance)

Resume

Video - <https://www.youtube.com/watch?v=g9jUMQMJNQg>

Resume Templates - <https://career.arizona.edu/resources/how-to-write-your-first-resume/>

Naviance - About us, Resume template

Essay - Common App Topics - <https://www.commonapp.org/apply/essay-prompts>

College Essay Guy (free resource) - [https://www.collegeessayguy.com/college-application-](https://www.collegeessayguy.com/college-application-hub)

[hub](https://www.collegeessayguy.com/college-application-hub)

Auditions/Portfolios - see college website

Interviews - see college website

# HOW TO APPLY TO COLLEGE

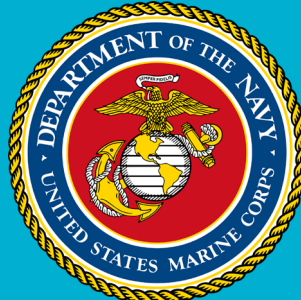
EARLY ACTION V. EARLY DECISION, REGULAR DECISION, ROLLING

## APPLICATION PROCESS

- ★ THE COMMON APPLICATION: [WWW.COMMONAPP.ORG](http://WWW.COMMONAPP.ORG)
- ★ APPLYING DIRECT TO INSTITUTION
  - COLLEGE ESSAY
  - RESUME
  - APPLICATION FEE OR FEE WAIVER
- ★ NAVIANCE
  - TRANSCRIPT
  - LETTER OF RECOMMENDATION
  - SCHOOL PROFILE
- ★ COLLEGE BOARD: [WWW.COLLEGEBOARD.ORG](http://WWW.COLLEGEBOARD.ORG)
  - SAT SCORES - TAKE ADVANTAGE OF 4 FREE REPORTS
  - AP SCORES
- ★ ACT: [WWW.ACT.ORG](http://WWW.ACT.ORG)
  - ACT SCORES

# MILITARY

- ★ ARMY: [WWW.ARMY.MIL](http://WWW.ARMY.MIL)
- ★ MARINES: [WWW.MARINES.MIL](http://WWW.MARINES.MIL)
- ★ NATIONAL GUARD: [WWW.NATIONALGUARD.MIL](http://WWW.NATIONALGUARD.MIL)
- ★ NAVY: [WWW.NAVY.MIL](http://WWW.NAVY.MIL)
- ★ COAST GUARD: [WWW.USCG.MIL](http://WWW.USCG.MIL)
- ★ AIR FORCE: [WWW.AIRFORCE.COM](http://WWW.AIRFORCE.COM)



# EMPLOYMENT RESOURCES

## USEFUL WEBSITES

### ★ NAVIANCE

- CLUSTER FINDER
- CAREER INTEREST PROFILER
- CAREER SEARCHING
- RESUME BUILDER

### ★ NORTH SHORE YOUTH CAREER CENTER

★ <https://masshire-northshorewb.com/youth/>

### ★ MASS CAREER INFORMATION SYSTEM:

[WWW.MASSCIS.INTOCAREERS.ORG](http://WWW.MASSCIS.INTOCAREERS.ORG)

### ★ O\*NET RESOURCE CENTER:

[WWW.ONETCENTER.ORG](http://WWW.ONETCENTER.ORG)

### ★ MASS APPRENTICESHIP & UNIONS:

[WWW.MASS.GOV/BECOMINGAN-APPRENTICE](http://WWW.MASS.GOV/BECOMINGAN-APPRENTICE)

# CAREER TRAINING PROGRAMS

- ★ PVMHS CAREER & TECHNICAL EDUCATION (CTE)

- COSMETOLOGY, CULINARY ARTS, EARLY CHILDHOOD EDUCATION, ELECTRONICS, MEDICAL ASSISTING, PROTECTIVE SERVICES

- ★ NORTH SHORE COMMUNITY COLLEGE OPTIONS:

<https://www.northshore.edu/search/?q=CAREER>

- ★ MASS APPRENTICESHIP & UNIONS [www.mass.gov/becomingan-apprentice](http://www.mass.gov/becomingan-apprentice)

[www.MASS.GOV/BECOMINGAN-APPRENTIC](http://www.MASS.GOV/BECOMINGAN-APPRENTIC)



# Important Financial Aid Information

- **MEFA:** Massachusetts Educational Financing Authority

<https://www.mefa.org/>

- **FAFSA:** Free Application for Student Aid

<https://studentaid.gov/h/apply-for-aid/fafsa>

- **CSS PROFILE:** College Scholarship Service

<https://cssprofile.collegeboard.org/>

- Scholarships Information is sent out constantly as we become aware of them. The local Scholarship booklet links will be available in January

<https://peabody.k12.ma.us/departments/guidance/>







# NEXT STEPS

- MAINTAIN GOOD GRADES
- YOU HAVE OPTIONS AFTER HIGH SCHOOL
- CHECK YOUR EMAIL OFTEN
- UTILIZE [NAVIANCE](#) FOR CAREER AND COLLEGE EXPLORATION
- CREATE A RESUME
- ASK TWO TEACHERS FOR RECOMMENDATIONS
- VISIT THE [PVMHS GUIDANCE WEBSITE](#) FOR HELPFUL LINKS
- MEET WITH YOUR GUIDANCE COUNSELOR REGULARLY





**Family Connection is a comprehensive website that you and your student can use to help in making decisions about colleges and careers.**

### **What can Naviance be used for?**

- **Researching colleges:** Compare GPA and standardized test scores with data from students that have applied and been admitted in the past
- **College Visits:** Sign up to attend small group presentations
- **Communication:** We can share information with you and your child about upcoming meetings and events, local scholarship opportunities, community service opportunities and other important links and resources

### **How do I access Naviance?**

- To visit our school's Family Connection site, use your web browser to connect to:

<https://student.naviance.com/pvmhs>

To login for the first time you will need to request a temporary password from your Guidance Counselor

Once your account is set up you will be able to login using your username (email) and password.

**THANK YOU FOR JOINING US  
THIS EVENING!**